

Proposal Addendum #1
for
BUT – Salzman Road Extension
PID 98852

Completion Date Change: No

Bid Item Changes, Additions or Deletions: Yes

Funding Splits Required: No

Deleted Bid Items:

Ref	Item No	Total Quantity	Unit	Description	Section	Funding
	638E09800	9	EACH	12" X 12" TAPPING SLEEVE, VALVE AND VALVE BOX		
	652E10000	2473	CY	PLACING STOCKPILED TOPSOIL		

Revised Bid Items:

Ref	Item No	Total Quantity	Unit	Description	Section	Funding
	623E38500	30	EACH	MONUMENT ASSEMBLY		
	638E02404	3339	FT	12" WATER MAIN DUCTILE IRON PIPE ANSI CLASS 53, PUSH-ON JOINTS AND FITTINGS		
	206E10500	563	TONS	CEMENT		
	203E20000	15627	CY	EMBANKMENT		
	652E10001	3691	CY	PLACING STOCKPILED TOPSOIL, AS PER PLAN		

Added Bid Items:

Ref	Item No	Total Quantity	Unit	Description	Section	Funding
	861E1000	307	SY	GEOGRID FOR SUBGRADE		

				STABILIZATION		
	203E20001	1100	CY	EMBANKMENT, AS PER PLAN, USING CEMENT TREATED SOILS		
	638E00604	71	FT	6" WATER MAIN DUCTILE IRON PIPE ANSI CLASS 53, PUSH- ON JOINTS AND FITTINGS		
	638E07800	8	EACH	6" GATE VALVE AND VALVE BOX		
	638E08100	4	EACH	12" GATE VALVE AND VALVE BOX		

Please be advised of the following:

Add the following Note: YES

1. Additional topsoil will be used as additional cover on slopes requiring seeding and mulching as directed by the Engineer. The remainder (excess) shall be stock piled as directed by the Engineer on the adjacent farm. Some of the excavated material for the detention basin may be suitable for embankment but the top soil is not.

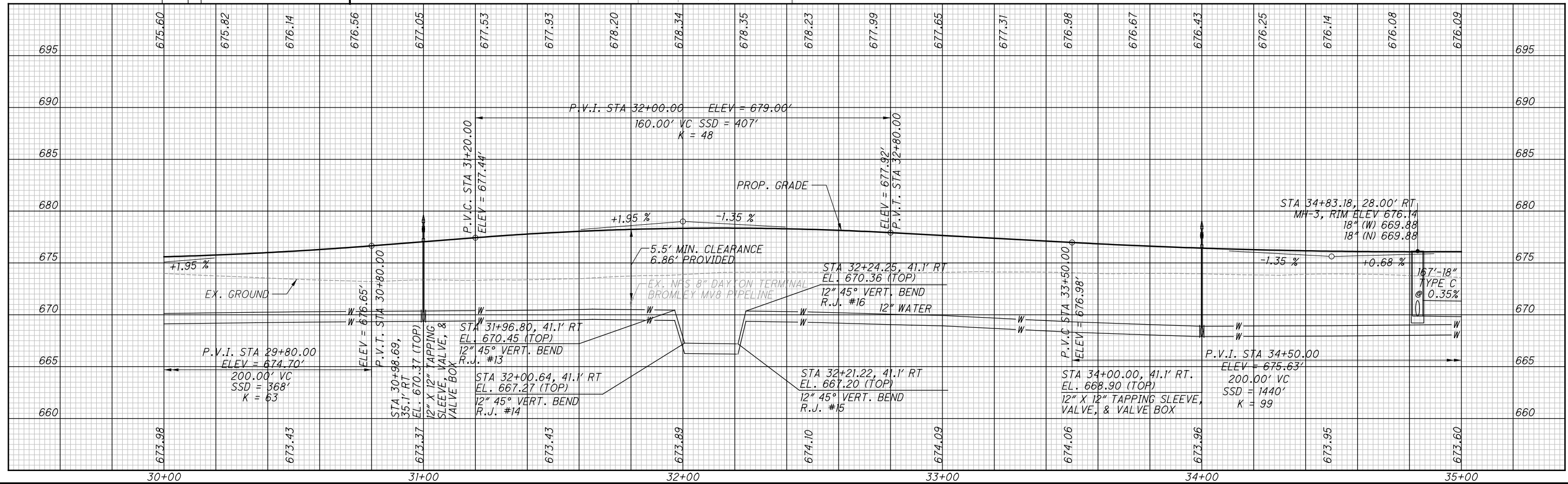
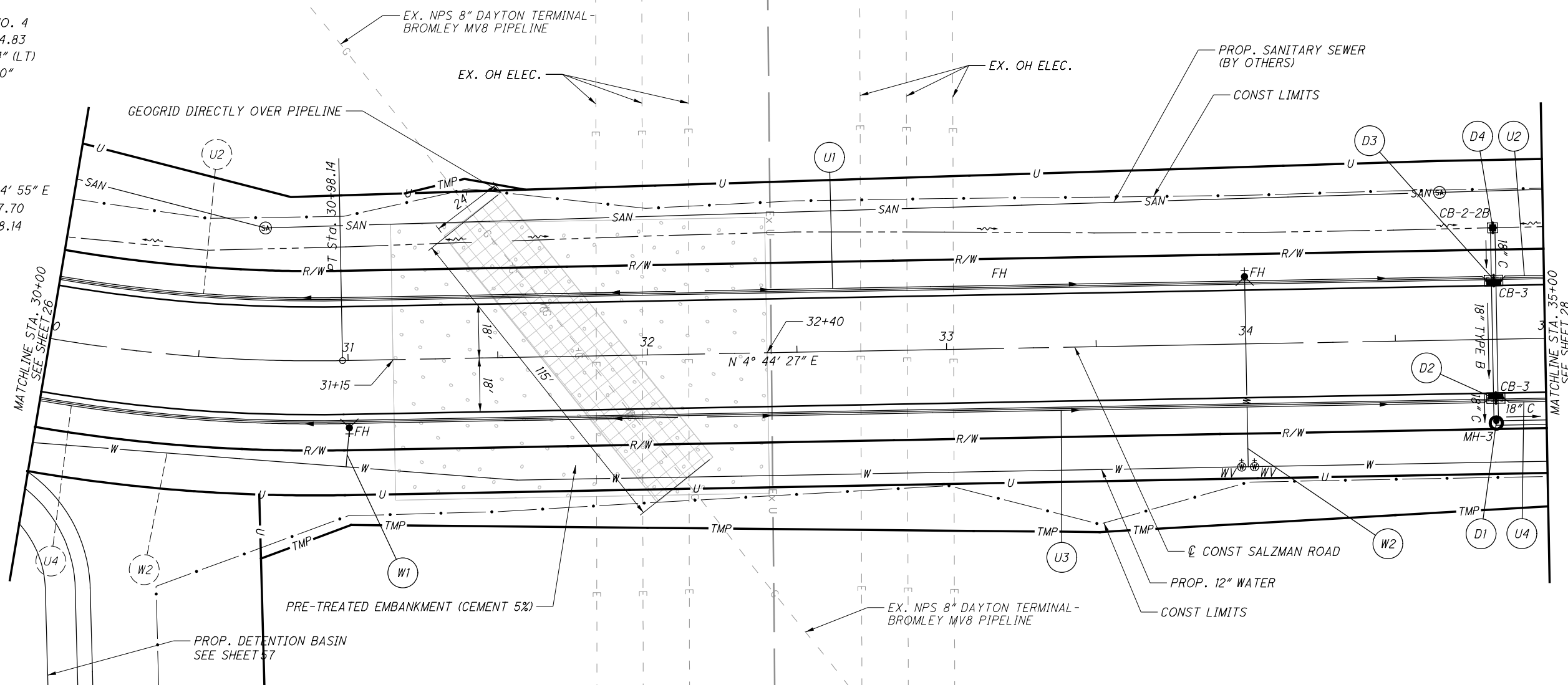
Changes to plan notes on plan sheet 4 Item 659 – Seeding and Mulching – **Placing** Stockpiled Topsoil, shall be eliminated.

Item 652-Placing Stockpiled Topsoil, as per plan, will be revised and shall include placing 6" of stockpiled topsoil for the seeding and mulching areas (3654cy) and the vegetated biofilter ditches (37cy). This will leave an excess of 502cy (4193cy-3654cy-37cy) to remain stockpiled as directed by the engineer on the adjacent farm.

2. For hydrants on the same side of the road as the main, install a 12" x 6" tee, 6" lead with 6" gate valve and fire hydrant assembly. For hydrants on the opposite side of the road as the main, install a 12" x 12" tee, 12" gate valve, 12" lead to a point behind the curb, 12" x 6" tee with plug on the empty side of the tee (for future development), 6" lead with 6" gate valve and fire hydrant assembly.

3. Construction Layout Staking and Surveying – The Right of Way shall be staked at the initiation of the project so as to clearly delineate the right of way for the adjacent farmer.

CURVE DATA NO. 4
 P.I. Sta. 29+84.83
 $\Delta = 25^\circ 20' 54''$ (LT)
 $D_c = 11^\circ 00' 00''$
 $R = 520.87'$
 $T = 117.14'$
 $L = 230.44'$
 $E = 13.01'$
 $\theta_{max} = NC$
 $C.B. = N 17^\circ 24' 55'' E$
 PC Sta. 28+67.70
 PT Sta. 30+98.14



CALCULATED JWG
 CHECKED WAA

**PLAN AND PROFILE
 STA. 30+00 TO STA. 35+00**

**BUT-SALZMAN
 ROAD EXTENSION**

G:\C013\0060\Road\sheet\98852GP005.dgn 1/17/2017 2:54:41 PM mhtrrell

Pre-Bid Questions and Answers

Butler County Transportation Improvement District - Prebid Questions

Project No. 98852 BUT – Salzman Road Extension

All Pre-bid questions and answers will be posted to the Butler County Transportation Improvement District website www.bctid.org.

Question Submitted: 1/6/17

1. *Who do we contact for bid questions?*

All questions technical or otherwise should be addressed to David Spinney, Director Butler County TID, email: dspinney@bctid.org. All questions should be submitted in writing (email) and will be responded to as promptly as possible.

Question Submitted: 1/11/17

2. *The plans illustrate the crossing of liquid propane, natural gas, petroleum, and oil/gas within the project limits. The plan note indicates that some of the utilities may be extremely shallow, and the general contractor may be required to bring in additional fill to cross equipment over these utilities. The subgrade is to receive cement stabilization at a depth of 16 inches. The equipment used to complete this process is very large and heavy; the average reclaimer stabilizer has a weight of roughly 45 tons. How is the contractor safely going to complete stabilization operations in areas where these volatile utilities cross? Will the BCTID please review the method to stabilize the subgrade in these areas and please add an additional bid SY bid item for this work?*

A. Three of the pipelines (Enterprise, Rockies Express , and Duke) have sufficient cover to allow for cement stabilization per plan. The Bromley pipeline requires fill to be added. An addendum will be issued calling for geogrid to displace load laterally and placement of cement treated embankment for this crossing

3. *Will the BCTID add a lump sum bid item to provide temporary ramping in these areas?*

A. No temporary ramping is required

Question Submitted: 1/12/17

4. *Will slag be allowed on this project?*

A. Slag is not acceptable because of the issue of potential leaching into the adjacent soils (cropland) .

5. *Can the excess topsoil be used for borrow in the pond area?*

A. It must meet ODOT specifications in its placement.

Questions Submitted: 1/17/17

6. *Please clarify why the contractor is to install 12"x12" Tapping Sleeves & Valves at all fire hydrant locations. Also, are the fire hydrant leads to be 12", or should we reduce them to 6" after the tapping valve. If the leads are to be 6", please consider adding a pay item for 6" DIP.*

A. For hydrants on the same side of the road as the main, install a 12" x 6" tee, 6" lead with 6" gate valve and fire hydrant assembly. For hydrants on the opposite side of the road as the main, install a 12" x 12" tee, 12" gate valve, 12" lead to a point behind the curb, 12" x 6" tee with plug on the empty side of the tee (for future development), 6" lead with 6" gate valve and fire hydrant assembly.

7. *6" Fire Hydrant-Is this to include the 6" gate valve, box & 6" pipe? Typically these are separate pay items.*

A. Will be broken out as separate pay items.

8. *Fire Hydrant Adjusted to grade at station 13+19 looks like it should be removed to connect to main?*

A. The fire hydrant adjusted to grade item should include attaching the new water main to the old water main and any adjustments needed to keep the existing hydrant.

9. *Monument Assembly 15 Each – Is there a drawing showing were these are to be installed or are they contingency items?*

A. The monument assemblies are listed on the RW plans on sheet 69 of 74. The quantity should be changed to 30 each, instead of 15 each.

10. *12" x 12" Tapping Sleeve, Valve & Valve Box – It says 9 Each but these appear to be the Tees that go in for the new hydrants. I don't think you need all these.*

A. See answer to Question 6 above.

11. *27" Conduit Type B is a pay item but in the plans it is shown as Type C?*

A. The 27" conduit should be Type C as shown in plans.

12. *On plan sheet 55, the 84" conduit is called out as a 706.02 conduit. No reference is made to this call out in the bid schedule. Is this 84" pipe required to be 706.02 material.*

A. The culvert is required to be 706.02 because of cover and design issues.

13. *The 27" and 42" conduits are listed type B in the bid proposal, but all the plans call out as type C.*

A. The 27" and 42" conduit should be Type C as shown in plans.

14. *Will all elements of 611 conduit (storm drainage) be required, in particular the post install performance evaluations (video of pipe)?*

A. Video of pipe is not required.

15. *For the waterline elements of the job. Plans in the cross sections call out a minimum 4 FT cover, whereas the notes call out city of Monroe specifications which list a 4' 6" cover? What specification is to be followed?*

A. The waterline should have a minimum 4FT cover.

16. *On the waterline as well, plans call for 12" tapping sleeves and valves. All these locations seem to be where a 12" line comes off the main trunk line to go to a fire hydrant. Would the contractor be allowed to simply install a 12" Tee and then a 12" gate valve at these locations. All the line will be laid prior to filling, so there is no reason to have a tapping sleeve and valve since the line is new.*

A. See answer to Question 6 above.

17. *Plans show all fire hydrants coming off of 12" lines, will any reduction to 6" be required other than right at the hydrant?*

A. See answer to Question 6 above.

18. *Will any 6" gate valves be required for the hydrants, the plans don't show any?*

A. See answer to Question 6 above.

Questions Submitted: 1/18/17 Pre-bid Meeting

19. *Provide information regarding the required DBE Utilization Plan discussed at the Pre-bid Meeting.*

A. See the Bid Document Section IV Federal and State Requirements page 18. The DBE Utilization Plan shall be submitted by the time of the bid. It shall be submitted online at <https://odot.formstack.com/forms/dbe>.

20. *On sheet 29 a new 12" gate valve is to be placed at the tie in to the existing water line. Is this to replace the existing valve or in addition to?*

A. In addition to. Install per plan

21. *Sheet 23 at the connection of the water line to the existing line, the existing fire hydrant is to be adjusted to grade. Does this include any necessary piping and appurtenances?*

A. Yes, this item includes any related appurtenances (pipe, valve, etc.) necessary.

22. *The plan notes on page 4 Item 651 – Topsoil Stockpiled and Item 652 Placed Stockpiled Topsoil indicates an excess of 1720 cu yd but the plan does not identify a stockpile location on site or otherwise. Will this need to be removed from the site? Can it be used for detention basin embankment?*

A. Additional topsoil will be used as additional cover on slopes requiring seeding and mulching as directed by the Engineer. The remainder (excess) shall be stock piled as directed by the Engineer on the adjacent farm. Some of the excavated material for the detention basin may be suitable for embankment but the top soil is not.

Changes to plan notes on plan sheet 4 Item 659 – Seeding and Mulching – Placing Stockpiled Topsoil, shall be eliminated.

Item 652-Placing Stockpiled Topsoil, as per plan, will be revised and shall include placing 6” of stockpiled topsoil for the seeding and mulching areas (3654cy) and the vegetated biofilter ditches (37cy). This will leave an excess of 502cy (4193cy-3654cy-37cy) to remain stockpiled as directed by the engineer on the adjacent farm.

Questions Submitted: 1/18/17

23. *On page 5 of the plans under the “water system items” it says that the contractor shall pay for any inspection fees required by the city; can or will there be an added bid item for this as an allowance?*

A. The City is waiving any water inspection fees.

Revised Bid Tabulation (Schedule of Prices)

ADDENDUM #1

1/19/2017

BCEO

Schedule Of Prices By Category

Project Number: 2017-05

Project Title or Road Number: BUT-Salzman Road Extension

BIDDER MUST FILL IN UNIT PRICES IN NUMERALS; MAKE EXTENSION FOR EACH ITEM AND TOTAL. FOR COMPLETE INFORMATION CONCERNING THESE ITEMS, SEE PLANS AND SPECIFICATIONS, INCLUDING SPECIAL PROVISIONS.

Item No.	Description	Units	Quantity	Unit Price	Total Price
DRAINAGE					
511E53010	CLASS QC1 CONCRETE, MISC.:	CU YD	14		
	Forebay				
602E20000	CONCRETE MASONRY	CU YD	11.3		
605E05210	4" UNCLASSIFIED PIPE UNDERDRAIN WITH FABRIC WRAP	FT	502		
605E06020	4" BASE PIPE UNDERDRAINS WITH FABRIC WRAP	FT	4,797.00		
611E00410	4" CONDUIT, TYPE F FOR UNDERDRAIN OUTLET	FT	130		
611E00900	6" CONDUIT, TYPE B	FT	725		
611E01100	6" CONDUIT, TYPE C	FT	45		
611E01400	6" CONDUIT, TYPE E	FT	725		
611E01500	6" CONDUIT, TYPE F	FT	725		
611E04400	12" CONDUIT, TYPE B	FT	242		
611E04600	12" CONDUIT, TYPE C	FT	90		
611E07400	18" CONDUIT, TYPE B	FT	39		
611E07600	18" CONDUIT, TYPE C	FT	258		
611E10400	24" CONDUIT, TYPE B	FT	39		
611E10600	24" CONDUIT, TYPE C	FT	67		
611E12100	27" CONDUIT, TYPE C	FT	460		
611E13600	30" CONDUIT, TYPE C	FT	156		
611E19600	42" CONDUIT, TYPE C	FT	463		
611E20900	48" CONDUIT, TYPE B	FT	63		
611E21100	48" CONDUIT, TYPE C	FT	299		
611E28000	84" CONDUIT, TYPE A	FT	184		
	706.02				
611E98150	CATCH BASIN, NO. 3	EACH	6		
611E98180	CATCH BASIN, NO. 3A	EACH	12		
611E98470	CATCH BASIN, NO. 2-2B	EACH	1		
611E98540	CATCH BASIN, NO. 2-4	EACH	2		
611E98510	CATCH BASIN, NO. 2-3	EACH	2		
611E98541	CATCH BASIN, NO. 2-4, AS PER PLAN	EACH	1		
611E98570	CATCH BASIN, NO. 2-5	EACH	1		
611E99574	MANHOLE, NO. 3	EACH	8		
Total DRAINAGE					

1/19/2017

BCEO

Schedule Of Prices By Category

Project Number: 2017-05

Project Title or Road Number: BUT-Salzman Road Extension

BIDDER MUST FILL IN UNIT PRICES IN NUMERALS; MAKE EXTENSION FOR EACH ITEM AND TOTAL. FOR COMPLETE INFORMATION CONCERNING THESE ITEMS, SEE PLANS AND SPECIFICATIONS, INCLUDING SPECIAL PROVISIONS.

Item No.	Description	Units	Quantity	Unit Price	Total Price
EROSION CONTROL					
601E11000	RIPRAP USING 6" REINFORCED CONCRETE SLAB	SQ YD	9		
601E32004	ROCK CHANNEL PROTECTION, TYPE A WITH FABRIC FILTER	CU YD	25		
601E32104	ROCK CHANNEL PROTECTION, TYPE B WITH FABRIC FILTER	CU YD	19		
601E32200	ROCK CHANNEL PROTECTION, TYPE C WITH FILTER	CU YD	3		
601E32204	ROCK CHANNEL PROTECTION, TYPE C WITH FABRIC FILTER	CU YD	4		
659E00100	SOIL ANALYSIS TEST	EACH	1		
652E10001	PLACING STOCKPILED TOPSOIL, AS PER PLAN	CU YD	3,691.00		
659E10000	SEEDING AND MULCHING	SQ YD	21,921.00		
659E14000	REPAIR SEEDING AND MULCHING	SQ YD	1,096.00		
659E15000	INTER-SEEDING	SQ YD	1,096.00		
659E20000	COMMERCIAL FERTILIZER	TON	3.06		
659E31000	LIME	ACRE	4.53		
659E35000	WATER	M GAL	121		
670E00200	VEGETATED SWALE EROSION PROTECTION	SQ YD	221		
670E00710	DITCH EROSION PROTECTION MAT, TYPE A	SQ YD	255		
832E15000	STORM WATER POLLUTION PREVENTION PLAN	LUMP	1		
	This item includes all costs associated with the development, implementation, inspection and the required documentation of a Storm Water Pollution Prevention Plan for the Project described in this Contract. all of the specifications and requirements of ODOT supplemental specification 832 shall apply.				

ADDENDUM #1

1/19/2017

BCEO

Schedule Of Prices By Category

Project Number: 2017-05

Project Title or Road Number: BUT-Salzman Road Extension

BIDDER MUST FILL IN UNIT PRICES IN NUMERALS; MAKE EXTENSION FOR EACH ITEM AND TOTAL. FOR COMPLETE INFORMATION CONCERNING THESE ITEMS, SEE PLANS AND SPECIFICATIONS, INCLUDING SPECIAL PROVISIONS.

Item No.	Description	Units	Quantity	Unit Price	Total Price
832E30000	EROSION CONTROL	EACH	55,616.00		
	This item is for the installation of Storm Water BMPS as defined in appendix "F" of ODOT supplemental specifications 832. The Contractor shall enter \$1.00 in the unit price column and \$55,616.00 in the total column. If the Contractor neglects to enter the correct figure(s) the Contractors bid will be corrected and the process for "Mistake In Bid" shall follow. No work will be recognized or paid under this item unless agreed upon and approved by an authorized representative of the Butler County Engineer's Office.				
836E10000	SEEDING AND EROSION CONTROL WITH TURF REINFORCING MAT, TYPE 1	SQ YD	1,151.00		
836E10020	SEEDING AND EROSION CONTROL WITH TURF REINFORCING MAT, TYPE 2	SQ YD	229		
836E10030	SEEDING AND EROSION CONTROL WITH TURF REINFORCING MAT, TYPE 3	SQ YD	215		
Total EROSION CONTROL					
MAINTENANCE OF TRAFFIC					
616E10000	WATER	M GAL	101		
614E11000	MAINTAINING TRAFFIC	LUMP	1		
Total MAINTENANCE OF TRAFFIC					
MISC					
619E16000	FIELD OFFICE, TYPE A	MONTH	7		
623E10000	CONSTRUCTION LAYOUT STAKES AND SURVEYING	LUMP	1		
624E10000	MOBILIZATION	LUMP	1		
802E00001	PREMIUM ON INDUSTRIAL INSURANCE	LS	1		
802E00002	PREMIUM ON BID BOND	LS	1		
Total MISC					
PAVEMENT					
301E46000	ASPHALT CONCRETE BASE, PG64-22	CU YD	1,894.00		
304E20000	AGGREGATE BASE	CU YD	3,502.00		
407E10000	TACK COAT	GALLON	682		
441E50300	ASPHALT CONCRETE INTERMEDIATE COURSE, TYPE 2 (448)	CY	552		
441E50000	ASPHALT CONC SURFACE, TY 1, PG64-22, (448)	CY	395		
609E12000	COMBINATION CURB AND GUTTER, TYPE 2	FT	5,616.00		
690E12010	SPECIAL - GEOTEXTILE FABRIC	SQ YD	1,422.00		
Total PAVEMENT					

ADDENDUM #1

1/19/2017

BCEO

Schedule Of Prices By Category

Project Number: 2017-05

Project Title or Road Number: BUT-Salzman Road Extension

BIDDER MUST FILL IN UNIT PRICES IN NUMERALS; MAKE EXTENSION FOR EACH ITEM AND TOTAL. FOR COMPLETE INFORMATION CONCERNING THESE ITEMS, SEE PLANS AND SPECIFICATIONS, INCLUDING SPECIAL PROVISIONS.

Item No.	Description	Units	Quantity	Unit Price	Total Price
ROADWAY					
201E11000	CLEARING AND GRUBBING	LUMP	1		
202E23010	PAVEMENT REMOVED, ASPHALT	SQ YD	52		
202E32500	CURB AND GUTTER REMOVED	FT	16		
202E35100	PIPE REMOVED, 24" AND UNDER	FT	40		
202E38000	GUARDRAIL REMOVED	FT	38		
203E10000	EXCAVATION	CU YD	8,579.00		
203E20000	EMBANKMENT	CU YD	15,627.00		
203E22010	EMBANKMENT FOR WATER QUALITY DITCH CHECK	CU YD	46		
204E10000	SUBGRADE COMPACTION	SQ YD	1,995.00		
204E45000	PROOF ROLLING	HOURL	8		
206E10500	CEMENT	TON	563		
206E11001	CURING COAT, AS PER PLAN	SQ YD	13,547.00		
206E15030	CEMENT STABILIZED SUBGRADE, 16 INCHES DEEP	SQ YD	13,547.00		
206E30000	MIXTURE DESIGN FOR CHEMICALLY STABILIZED SOILS	LUMP	1		
623E38500	MONUMENT ASSEMBLY	EACH	30		
651E10000	TOPSOIL STOCKPILED	CU YD	4,193.00		
878E25000	INSPECTION AND COMPACTION TESTING OF UNBOUND MATERIALS	LUMP	1		
861E10000	GEOGRID FOR SUBGRADE STABILIZATION	SY	307		
203E20001	EMBANKMENT, AS PER PLAN	CY	1,100.00		
	Using Cement Treated Soils				
Total ROADWAY					
TRAFFIC CONTROL					
621E00100	RPM	EACH	188		
630E03100	GROUND MOUNTED SUPPORT, NO. 3 POST	FT	333		
630E08520	STREET NAME SIGN SUPPORT, NO. 3 POST	FT	15		
630E08600	SIGN POST REFLECTOR	EACH	3		
630E80100	SIGN, FLAT SHEET	SQ FT	128		
630E80500	SIGN, DOUBLE FACED, STREET NAME	EACH	2		
630E84900	REMOVAL OF GROUND MOUNTED SIGN AND DISPOSAL	EACH	6		
630E86002	REMOVAL OF GROUND MOUNTED POST SUPPORT AND DISPOSAL	EACH	5		
630E87500	REMOVAL OF POLE MOUNTED SIGN AND DISPOSAL	EACH	1		
642E30000	REMOVAL OF PAVEMENT MARKING	FT	421		
644E00100	EDGE LINE, 4"	MILE	0.04		

1/19/2017

BCEO

Schedule Of Prices By Category

Project Number: 2017-05

Project Title or Road Number: BUT-Salzman Road Extension

BIDDER MUST FILL IN UNIT PRICES IN NUMERALS; MAKE EXTENSION FOR EACH ITEM AND TOTAL. FOR COMPLETE INFORMATION CONCERNING THESE ITEMS, SEE PLANS AND SPECIFICATIONS, INCLUDING SPECIAL PROVISIONS.					
Item No.	Description	Units	Quantity	Unit Price	Total Price
644E00300	CENTER LINE	MILE	1.06		
644E00500	STOP LINE	FT	57		
644E00700	TRANSVERSE/DIAGONAL LINE	FT	259		
644E01300	LANE ARROW	EACH	8		
Total TRAFFIC CONTROL					
WATER WORK					
638E02404	12" WATER MAIN DUCTILE IRON PIPE ANSI CLASS 53, PUSH-ON JOINTS AND FITTINGS	FT	3,339.00		
638E07500	12" GATE VALVE	EACH	9		
638E10200	6" FIRE HYDRANT	EACH	8		
638E10400	FIRE HYDRANT ADJUSTED TO GRADE	EACH	1		
638E00604	6" WATER MAIN DUCTILE IRON PIPE ANSI CLASS 53, PUSH-ON JOINTS AND FITTINGS	FT	71		
638E08100	12" GATE VALVE AND VALVE BOX	EACH	4		
638E07800	6" GATE VALVE AND VALVE BOX	EACH	8		
Total WATER WORK					
Total					