

# PIONEER PARKWAY

STATE ROUTE 63 EXTENSION

## A Vision for Regional Economic Development and Job Creation

# The Vision

**Pioneer Parkway will be a new limited access highway, about three and a half miles in length, designed to improve travel safety, convenience, and access across northern Butler County.**

**This concept is designed to encourage development of about 1,500 acres already zoned for business and industry – with the potential to create about 5,400 new jobs.**

**Pioneer Parkway will provide an east-west travel link between the eastern end of Ohio 63 at Ohio 4 on the east and Ohio 73 and Wayne-Madison Road on the west.**

# The Vision

Quote from Cox Ohio editorial, headlined  
“New Hope for 63 Extension Plan”...

*The parkway plan, “is an indication that the potential for extraordinary economic growth and development along its corridor is strong. That’s not to mention the potential for safer and less-congested roadways.”*

# Benefits

- Safety Improvements
- Reduced Travel Time
- 5,400 New Jobs
- \$162 million in wages
- Increase tax base
- 170 acres in green space
- Already zoned for Industry
- Better access
- Railroad expansion opportunity

# Regional Map



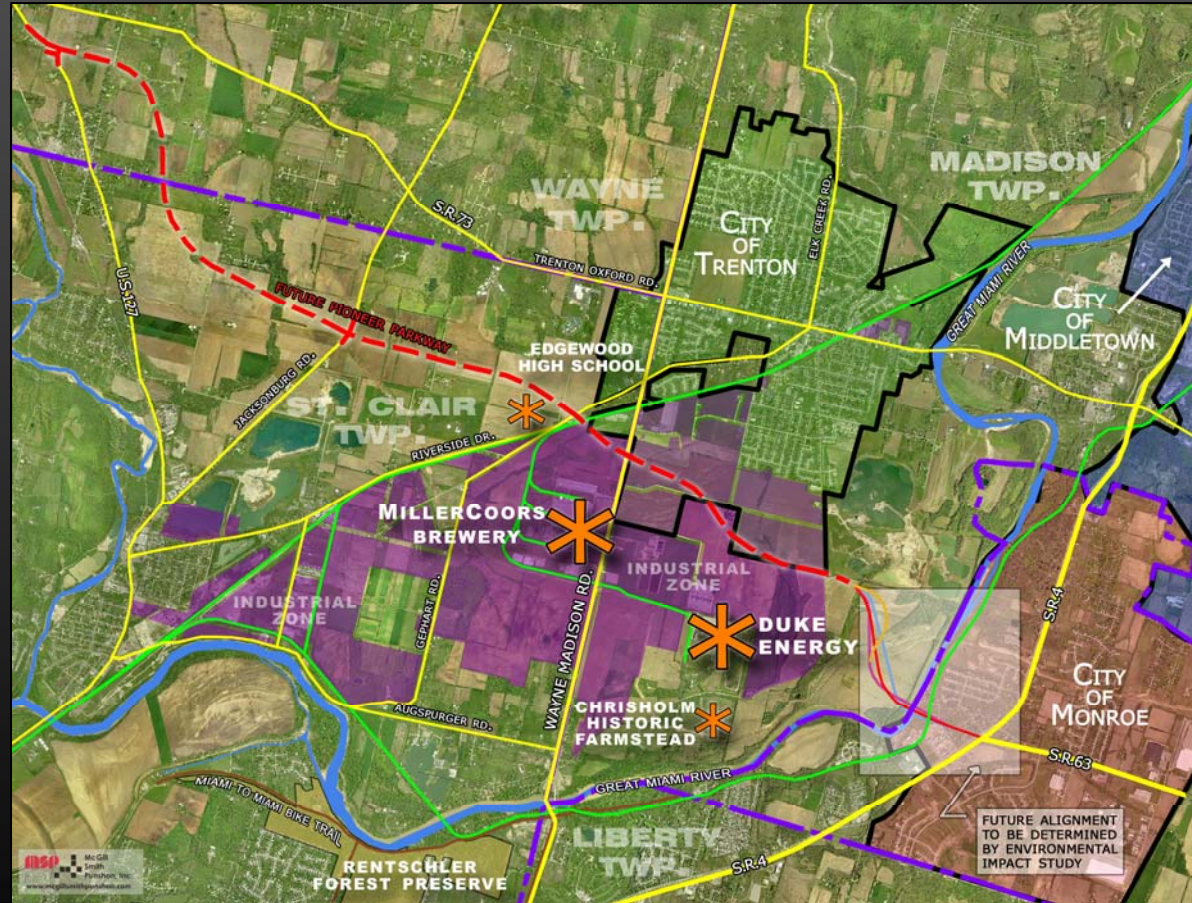
# Highway Extension

**LEGEND**

- FUTURE MIAMI TO MIAMI TRAIL
- FUTURE PIONEER PKWY. (PROPOSED S.R.63 EXT.)
- ROADS
- CSX RAILROAD
- POINTS OF INTEREST
- INDUSTRIAL (1500 AC AVAIL.)
- CITY OF TRENTON
- CITY OF MONROE
- CITY OF MIDDLETOWN
- METROPARKS OF BUTLER COUNTY
- GREAT MIAMI RIVER
- TOWNSHIP LINE

0 1/4 1MI  
0 1/2 1MI

IBSO MGR Smith Partners, Inc.



# S.R. 63 Interchange

Phase 1 of the Parkway will extend west from the intersection of Ohio 63 and Ohio 4.



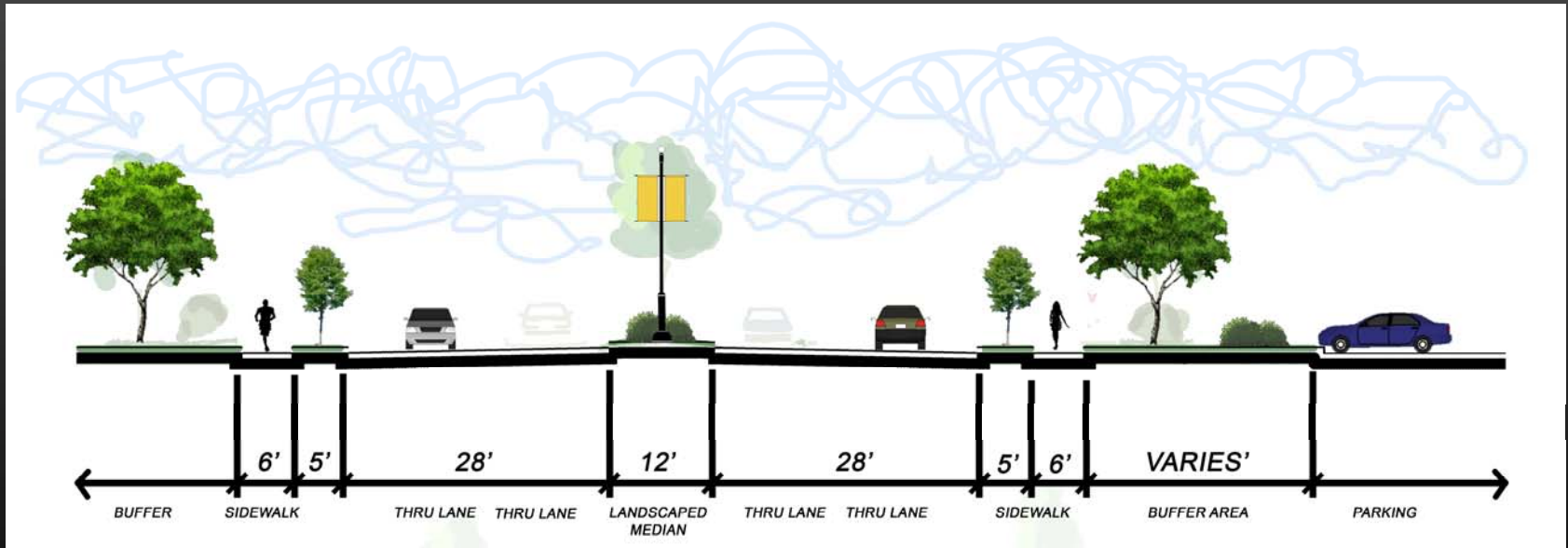
# Industrial Examples



# Industrial Examples



# Boulevard Section



# Highway Extension

**LEGEND**

- FUTURE MIAMI TO MIAMI TRAIL
- FUTURE PIONEER PKWY. (PROPOSED S.R.63 EXT.)
- ROADS
- CSX RAILROAD
- POINTS OF INTEREST
- INDUSTRIAL (1500 AC AVAIL.)
- CITY OF TRENTON
- CITY OF MONROE
- CITY OF MIDDLETOWN
- METROPARKS OF BUTLER COUNTY
- GREAT MIAMI RIVER
- TOWNSHIP LINE

0 1/4 1MI  
0 1/2 1MI

IBSO MGR Smith Partners, Inc.

