

THE BENEFITS

- **Safety improvements** with new roadway in comparison to older, existing travel options in the region., including updating the existing State Route 4 and State Route 63 interchange
- **Reduced travel time** for emergency services (police, fire, medical assistance) and improved travel time to Interstate 75
- Potential to create about **5,400 new jobs**
- Generate at least **\$162 million in yearly wages** in new jobs
- Develop about 1,500 acres during a 20 to 30-year period while improving access to 1,000 acres already developed
- Preserve a minimum of more than **170 acres in green space**, in compliance with local land use and zoning regulations
- About 97 percent of property **already zoned for industrial use**
- Development would **increase tax base for local governments and schools**
- **Better access** to historic sites, parks and hiking and biking trails
- Includes opportunity for **railroad expansion and improvements**

PIONEER PARKWAY

Pioneer Parkway, as shown on the map, will serve the area bounded on the east and south by the Great Miami River and Augspurgen Road, on the north by the City of Trenton and on the west by Gephart Road. Phase 1 of the Parkway will extend west from the intersection of Ohio 63 and Ohio 4 to the vicinity of Wayne-Madison Road and Ohio 73.



Butler County Transportation Improvement District

1921 Fairgrove Avenue
Hamilton, Ohio 45011
(513) 785-3450 phone
(513) 785-3444 fax
ronp@bctid.org e-mail
www.bctid.org

PIONEER PARKWAY

STATE ROUTE 63 EXTENSION

A VISION
FOR
REGIONAL
ECONOMIC
DEVELOPMENT
AND
JOB CREATION

JULY 2011

THE VISION

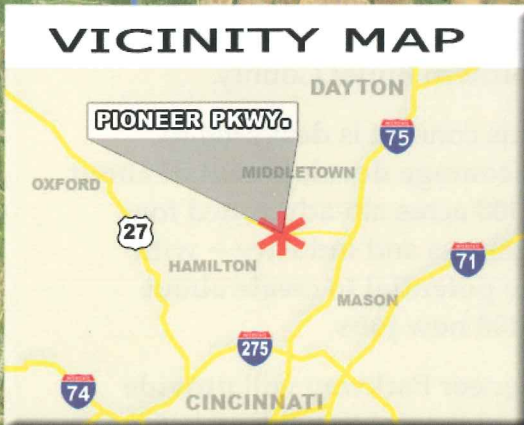
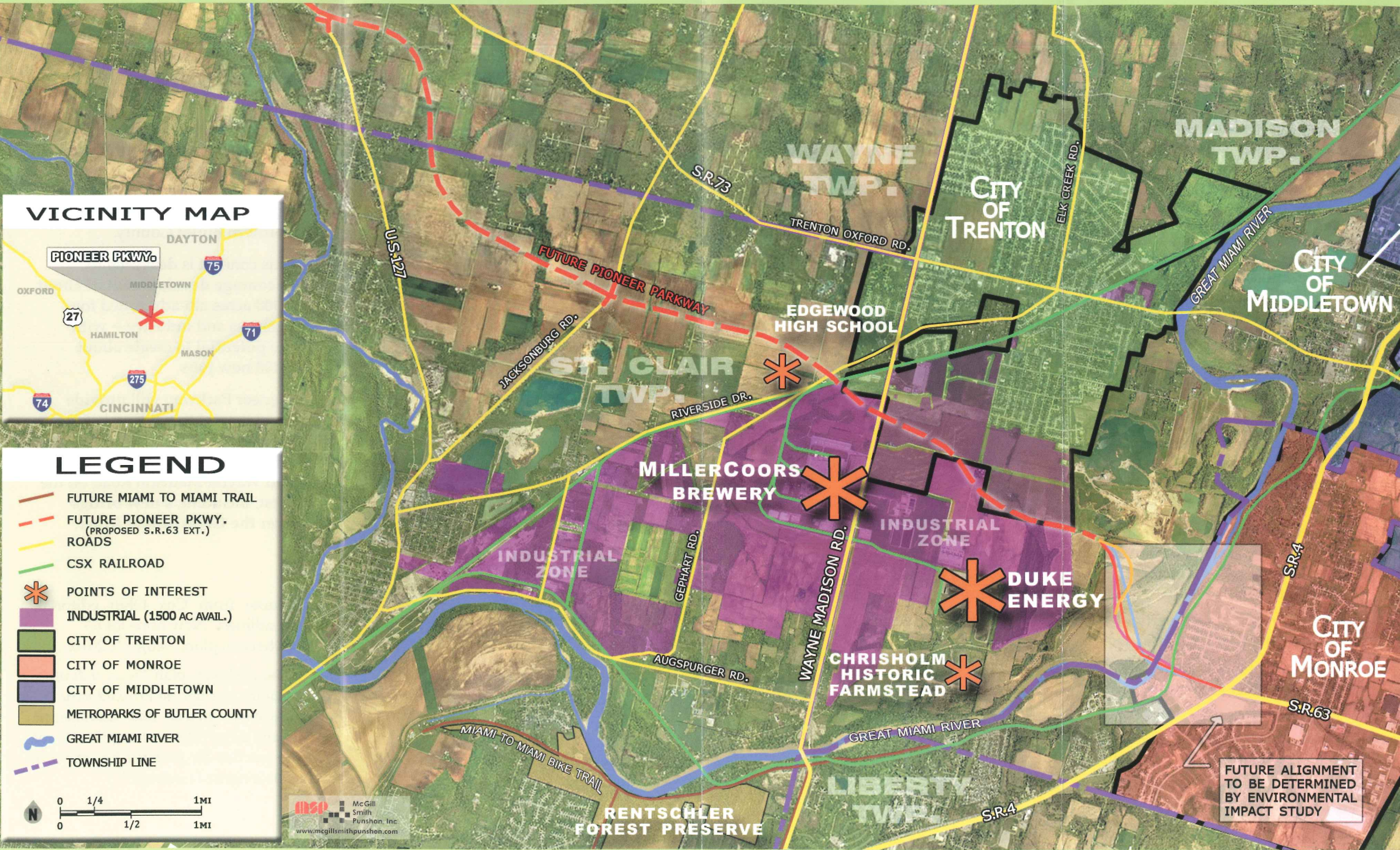
Pioneer Parkway will be a new limited access highway, about three and a half miles in length, **designed to improve travel safety, convenience and access** across northern Butler County.

This concept is **designed to encourage development of about 1,500 acres** already zoned for business and industry -- with the **potential to create about 5,400 new jobs**.

Pioneer Parkway will **provide an east-west travel link** between the eastern end of Ohio 63 at Ohio 4 on the east and Ohio 73 and Wayne-Madison Road on the west, including a **new bridge over the Great Miami River**.

Quote from Cox Ohio editorial, headlined "New hope for 63 extension plan," Aug. 15, 2010:

The parkway plan "is an indication that the potential for extraordinary economic growth and development along its corridor is strong. That's not to mention the potential for safer and less-congested roadways."



LEGEND

- FUTURE MIAMI TO MIAMI TRAIL
- FUTURE PIONEER PKWY. (PROPOSED S.R.63 EXT.)
- ROADS
- CSX RAILROAD
- POINTS OF INTEREST
- INDUSTRIAL (1500 AC AVAIL.)
- CITY OF TRENTON
- CITY OF MONROE
- CITY OF MIDDLETOWN
- METROPARKS OF BUTLER COUNTY
- GREAT MIAMI RIVER
- TOWNSHIP LINE

0 1/4 1MI
0 1/2 1MI

McGill Smith Punshon, Inc.
www.mcgillsmithpunshon.com

FUTURE ALIGNMENT TO BE DETERMINED BY ENVIRONMENTAL IMPACT STUDY